



VectorFurnitureFX



KEY FEATURES

The VectorFurnitureFX is a flexible tool, capable of cutting all materials with unrivalled speed and flexibility.



OVERVIEW

Manufacturers working with the VectorFurnitureFX have the flexibility they need to preserve their competitive edge and offer products of impeccable quality, while respecting production lead times.

OPERATION

Specializing in small and medium runs, the VectorFurnitureFX is controlled by a new generation of software that reduces fabric consumption by optimizing markers and cutting pieces at a tangent.

It is equipped with key features, such as variable vacuum for better material hold, preventive maintenance to maximize uptime, the Eclipse continuous conveyor advance system during cutting for productivity gains of up to 10%, and enhanced reporting functions to improve decision making.

Constant support from Lectra's experts helps to improve the cutting room's long-term performance and ensures a secured investment over time.

AVAILABLE OPTIONS

Lateral transfer system between spreading tables.

Blade cooling device

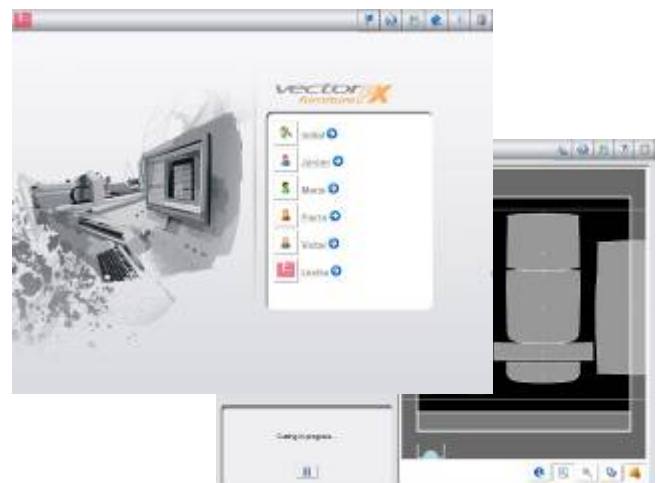
Conveyor synchronization with spreading tables

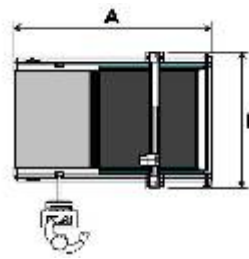
Barcode reader for secure data processing

Exhaust system for a cleaner work environment

Paper holder at the back of the machine

PostPrint: device that identifies cut pieces using self-adhesive labels.





TECHNICAL SPECIFICATIONS

MAIN EQUIPMENT	VectorFurnitureFX
Pre-programmed cutting parameters	✓
Display of markers and shapes to be cut, cutting simulation, permanent display of production data and machine performance	✓
EIA RS 274D and ISO 6983 data compatibility	✓
FXHEAD high performance cutting head, sharpening system configurable according to the textile application and single drill controlled by computer	✓
Process-oriented operating software	✓
Optimized cutting of pieces at a tangent (Management of proximities and tangents)	✓
Digitally controlled vacuum level for optimized material hold	✓
Smart performance reporting	✓
Access to remote experts for machine optimization	✓
Cutting while conveyor advances (Eclipse)	✓
Preventive maintenance with proactive alerts	✓
Automatic machine check-up	✓

TECHNICAL SPECIFICATIONS	VectorFurnitureFX
Cutting window effective width	72' – 1.82 m
Cutting window effective length	1.7 m
Operational cutting height	2.5 cm
Width A	3.822 m
Length B	2.604 m
Weight	2,430 kg
Temperature	10° - 43°
Humidity	<95 %
Noise level	77 dB
Average power consumption	15 kW
Installed electrical power	31.5 kW

ABOUT LECTRA

Lectra is the world leader in software, CAD/CAM equipment and related services dedicated to large-scale users of textiles, leather and industrial fabrics. Lectra addresses a broad array of major global markets, including fashion (apparel, accessories, footwear), automotive, aeronautical and furniture. With €216 million in 2006 revenues, Lectra employs 1,500 persons worldwide. Lectra is listed on the Eurolist of Euronext Paris.

For more information:

www.lectra.com

