



VectorFurnitureFP



KEY FEATURES

The VectorFurnitureFP is a flexible tool, capable of cutting all materials with optimal speed and quality.



OVERVIEW

A first step into the Lectra world of multi-ply cutting solutions, the VectorFurnitureFP is an excellent investment for upholstery manufacturers adopting automated cutting technology for the first time. It is easy to use and offers some of the lowest running costs on the market, as well as exceptional cutting quality.

OPERATION

The VectorFurnitureFP is a conveyor cutting system which can handle small and medium runs within extremely tight deadlines while offering excellent precision. Markers can be produced with pieces nested at a tangent, offering significant material savings.

Lectra's production experts will integrate the cutter into the production environment, and provide training and support.

AVAILABLE OPTIONS

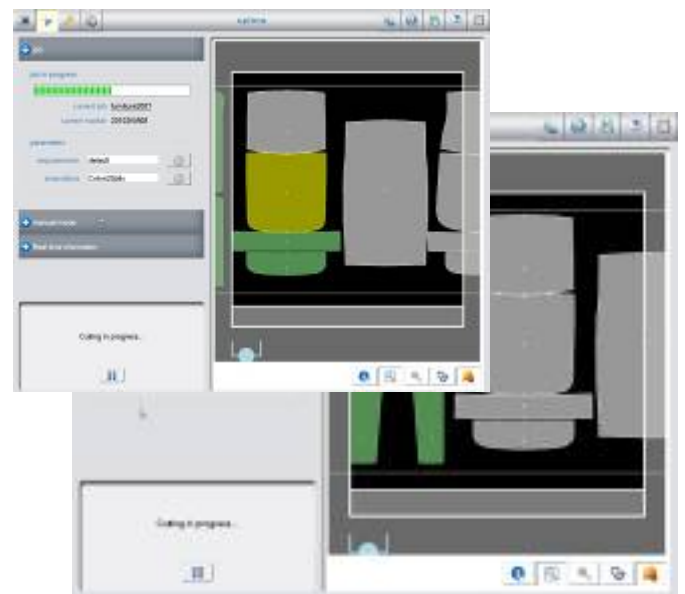
Lateral transfer system between spreading tables

Blade cooling device

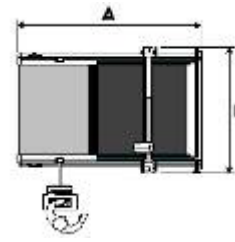
Barcode reader for secure data processing

Exhaust system for a cleaner work environment

Paper holder at the back of the machine



TECHNICAL SPECIFICATIONS



MAIN EQUIPMENT	VectorFurnitureFP
Pre-programmed cutting parameters	✓
Display of markers and shapes to be cut, cutting simulation, permanent display of production data and machine performance	✓
EIA RS 274D and ISO 6983 data compatibility	✓
FPHEAD high performance cutting head, sharpening system configurable according to the textile application and single drill controlled by computer	✓
Process-oriented operating software	✓
Optimized cutting of pieces at a tangent (Management of proximities and tangents)	✓
Energy Saver system to limit electricity consumption	✓
Production data export (XML and Excel formats)	✓
Secure connection to Lectra expertise centers (non-invasive for IT systems) for personalized help	✓
Alert messages for preventive maintenance and electronic maintenance logbook	✓

TECHNICAL SPECIFICATIONS	VectorFurnitureFP
Cutting window effective width	72' – 1.82 m
Cutting window effective length	1.7 m
Operational cutting height	2.5 cm
Width A	3.822 m
Length B	2.604 m
Weight	2,430 kg
Temperature	10° - 43°
Humidity	<95 %
Noise level	77 dB
Average power consumption	15 kW
Installed electrical power	31.5 kW

ABOUT LECTRA

Lectra is the world leader in software, CAD/CAM equipment and related services dedicated to large-scale users of textiles, leather and industrial fabrics. Lectra addresses a broad array of major global markets, including fashion (apparel, accessories, footwear), automotive, aeronautical and furniture. With €216 million in 2006 revenues, Lectra employs 1,500 persons worldwide. Lectra is listed on the Eurolist of Euronext Paris.

For more information:

www.lectra.com

