



Key characteristics

- The VectorFashionFX is a flexible tool, capable of cutting all materials with unrivalled speed and flexibility
- The VectorFashionFX lets you offer products of impeccable quality while keeping costs down.



OVERVIEW

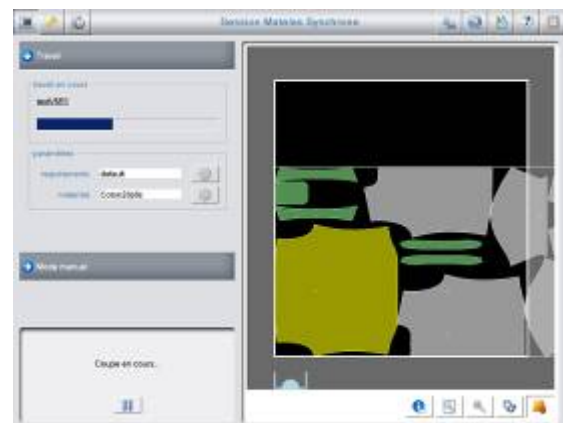
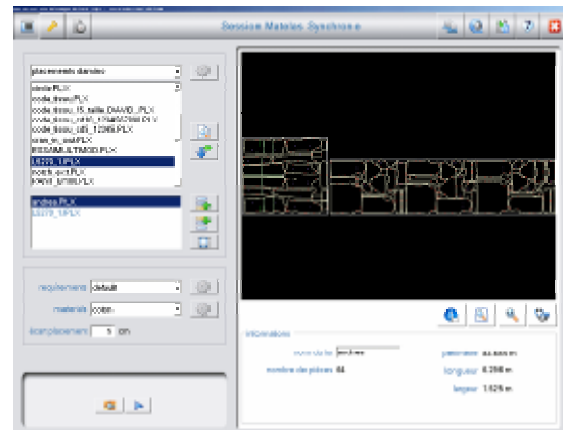
Manufacturers working with the VectorFashionFX have the flexibility they need to preserve their competitive edge and offer products of impeccable quality, whilst respecting production lead times.

OPERATION

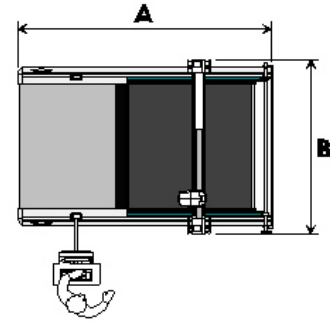
Specializing in small runs, the VectorFashionFX is controlled by a new generation of software that reduces fabric consumption by optimizing markers and cutting pieces at a tangent.

Its preventive maintenance and quality diagnostics guarantee maximum system efficiency in the long term.

Constant support from Lectra's experts helps you to improve your cutting room's long-term performance.



TECHNICAL SPECIFICATIONS



TECHNICAL SPECIFICATIONS	VectorFashionFP	VectorFashionFX
Cutting window effective width	72' - 1.82 m	72' - 1.82 m
Cutting window effective length	1.7 m	1.7 m
Operational cutting height	2.5 cm	2.5 cm
Width A	3.822 m	3.822 m
Length B	2.604 m	2.604 m
Preprogrammed cutting parameters	Yes	Yes
Display of markers and shapes to be cut, cutting simulation, permanent display of production data and machine performance	Yes	Yes
EIA RS 274D and ISO 6983 data compatibility	Yes	Yes
FXHEAD high performance cutting head, sharpening system configurable according to the textile application and heated drill controlled by computer	Yes	Yes
Process-oriented operating software	Yes	Yes
Optimized cutting of pieces at a tangent (GPT Management of proximities and tangents)	Yes	Yes
Digitally controlled vacuum level for material hold	No	Yes
Smart performance reporting	No	Yes
Access to remote experts for machine optimization	Yes	Yes
Cutting while conveyor advances (Eclipse)	No	Yes
Preventive maintenance with proactive alerts	No	Yes
Automatic machine check-up	No	Yes

TECHNICAL SPECIFICATIONS	VectorFashionFP	VectorFashionFX
Weight	2,430 kg	2,430 kg
Humidity	10° - 43°	10° - 43°
Humidity	<95 %	<95 %
Noise level	77 dB	77 dB
Average power consumption	?? kW	?? kW
Installed electrical power	31.5 kW	31.5 kW

For more information:

www.lectra.com

