



# VectorFashionMX9



## Key characteristics

The VectorFashionMX9 is a highly productive, flexible tool. Its cutting height of 9cm, allied with its extremely powerful motor and high performance cutting head enable you to cut knitted fabric with unmatched speed and flexibility.



## OVERVIEW

The fastest automatic cutting system on the market, the VectorFashionMX9 can cut large quantities of all types of garments, particularly knitwear, and guarantees you impeccable quality.

## OPERATION

VectorFashionMH is controlled by a new generation of software that reduces fabric consumption by optimizing markers and cutting pieces at a tangent.

It is equipped with standard features such as variable vacuum for a better fabric hold, preventive maintenance to limit breakdowns, Eclipse to gain an additional 10% of productivity and a powerful reporting tool to aid decision-making

Its preventive maintenance and quality diagnostics functions guarantee maximum system efficiency in the long term.

Lectra's experts constantly at our service help you to improve your cutting room's long-term performance.

## OPTIONS AVAILABLE

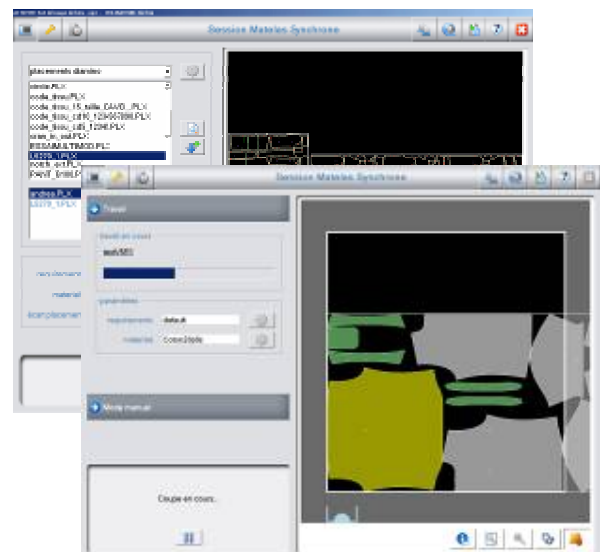
Lateral transfer system between several spreading tables.

Blade cooling device when cutting coated fabric

Conveyor synchronisation with spreading tables

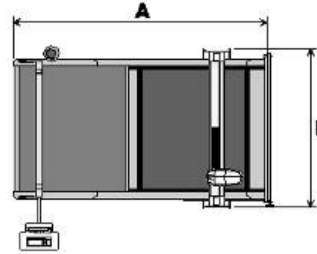
Barcode reader for secure data processing

Identification of cut pieces using self-adhesive labels (PostPrint).





# VectorFashionMX9



## TECHNICAL SPECIFICATIONS

DESCRIPTION	VectorFashionMX9
Pre-programmed cutting parameters	Yes
Display of markers and shapes to be cut, cutting simulation, permanent display of production data and machine performance	Yes
EIA RS 274D and ISO 6983 data compatibility	Yes
MH8HEAD high performance cutting head, configurable sharpening system according to the textile application and computer controlled heated drill	Yes
Process-oriented operating software	Yes
Optimized cutting of pieces at a tangent (Management of spacing and tangents)	Yes
Digitally controlled material hold vacuum	Yes
Smart performance reporting	Yes
Remote Access to experts for machine optimization	Yes
Cutting while conveyor advances (Eclipse)	Yes
Preventive maintenance with proactive alerts	Yes
Automatic machine check-up	Yes

SPECIFICATIONS TECHNIQUES	VectorFashionMX9
Cutting window effective width	71'' - 1,8 m / 86'' - 2,2 m
Cutting window effective length	1,7 m
Operational cutting height	9 cm
Width A	4,810 m
Length B	2,60 m / 3,00 m
Weight	3600 kg / 4100 kg
Temperature	10° - 43°
Humidity	< 95%
Noise level	<75 dBA
Average power consumption	15 kW
Installed electrical power	47kW