



Key characteristics

The VectorFashionMH is a versatile tool capable of cutting a wide variety of materials with unrivalled precision. It gives exceptional results on woven fabrics and is particularly suited to cutting coated material.



OVERVIEW

Allowing you to produce a wide variety of products of impeccable quality, and at the same time keeping costs down, VectorFashionMH is the ideal tool for the mass-production of garments in woven fabrics.

OPERATION

VectorFashionMH is controlled by a new generation of software that reduces fabric consumption by optimizing markers and cutting pieces at a tangent.

It is equipped with standard features such as variable vacuum for better fabric hold, preventative maintenance to limit breakdowns, Eclipse to gain an extra 10% of productivity and a powerful reporting tool to aid decision making.

Its preventive maintenance and quality diagnostics functions guarantee maximum system efficiency in the long term.

Lectra's experts constantly at your service help you to improve your cutting room's long-term performance.

OPTIONS AVAILABLE

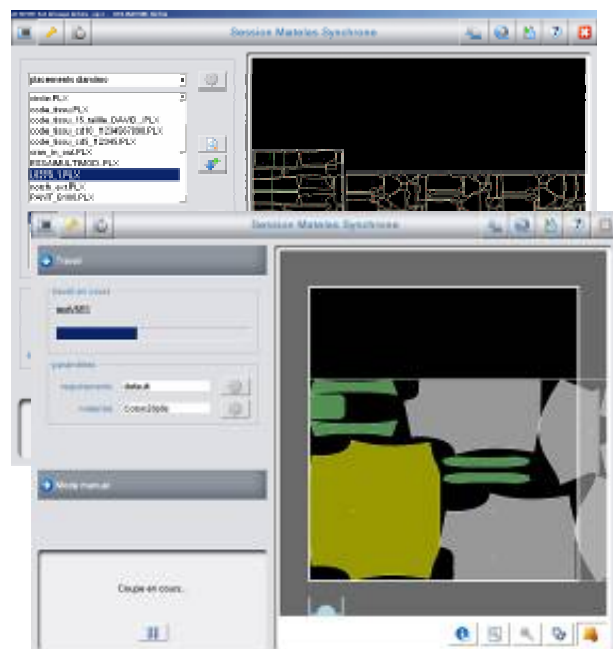
Lateral transfer system between several spreading tables.

Blade cooling device when cutting coated fabric

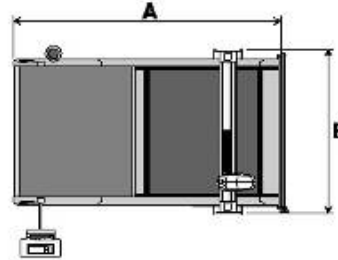
Conveyor synchronisation with spreading tables

Barcode reader for secure data processing

Identification of cut pieces using self-adhesive labels. (PostPrint)



TECHNICAL SPECIFICATIONS



DESCRIPTION	VectorFashionMH
Pre-programmed cutting parameters	Yes
Display of markers and shapes to be cut, cutting simulation, permanent display of production data and machine performance	Yes
EIA RS 274D and ISO 6983 data compatibility	Yes
MHHEAD high performance cutting head, configurable sharpening system according to the textile application and computer controlled heated drill	Yes
Process-oriented operating software	Yes
Optimized cutting of pieces at a tangent (Management of spacing and tangents)	Yes
Digitally controlled material hold vacuum	Yes
Smart performance reporting	Yes
Remote Access to experts for machine optimization	Yes
Cutting while conveyor advances (Eclipse)	Yes
Preventive maintenance with proactive alerts	Yes
Automatic machine check-up	Yes

TECHNICAL SPECIFICATIONS	VectorFashionMH
Cutting window effective width	71'' - 1,8 m / 86'' - 2,2 m
Cutting window effective length	1,7 m
Operational cutting height	5 cm
Width A	4,810 m
Length B	2,60 m / 3,00 m
Weight	3.840 kg / 4.320 kg
Temperature	< 40°
Humidity	<95 %
Noise level	< 73dBA
Average power consumption	15 kW
Installed electrical power	31,5kW

For more information:

www.lectra.com

