



Key characteristics

The VectorFashionFX is a flexible tool, capable of cutting all materials with unrivalled speed and flexibility



OVERVIEW

Manufacturers working with the VectorFashionFX have the flexibility they need to preserve their competitive edge and offer products of impeccable quality, whilst respecting production lead times.

OPERATION

Specializing in small runs, the VectorFashionFX is controlled by a new generation of software that reduces fabric consumption by optimizing markers and cutting pieces at a tangent.

It is equipped with standard features such as variable vacuum for a better material hold, preventative maintenance to limit breakdowns, Eclipse to gain 10% productivity and enhanced reporting functions to help decision makers.

Its preventive maintenance and quality diagnostics guarantee maximum system efficiency in the long term.

Constant support from Lectra's experts helps you to improve your cutting room's long-term performance.

AVAILABLE OPTIONS

Lateral transfer system between spreading tables.

Blade cooling device to cut coated fabric

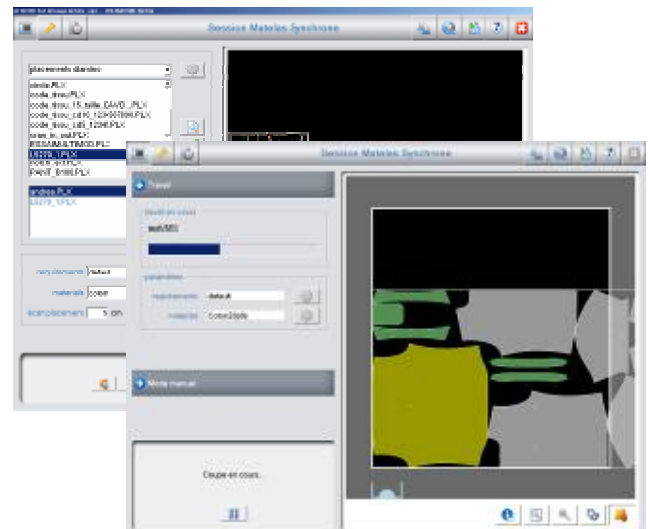
Conveyor synchronisation with spreading tables

Barcode reader for secure data processing

Exhaust system, for a cleaner work environment

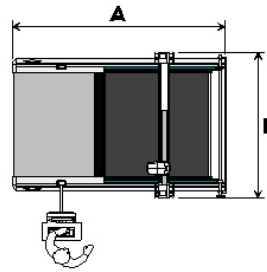
Paper Holder at the back of the machine

PostPrint: device that identifies cutpieces using self-adhesive labels.





VectorFashionFX



TECHNICAL SPECIFICATIONS

MAIN EQUIPMENT	VectorFashionFX
Preprogrammed cutting parameters	Yes
Display of markers and shapes to be cut, cutting simulation, permanent display of production data and machine performance	Yes
EIA RS 274D and ISO 6983 data compatibility	Yes
FXHEAD high performance cutting head, sharpening system configurable according to the textile application and heated drill controlled by computer	Yes
Process-oriented operating software	Yes
Optimized cutting of pieces at a tangent (Management of proximities and tangents)	Yes
Digitally controlled vacuum level for material hold	Yes
Smart performance reporting	Yes
Access to remote experts for machine optimization	Yes
Cutting while conveyor advances (Eclipse)	Yes
Preventive maintenance with proactive alerts	Yes
Automatic machine check-up	Yes

TECHNICAL SPECIFICATIONS	VectorFashionFX
Cutting window effective width	72' - 1.82 m
Cutting window effective length	1.7 m
Operational cutting height	2.5 cm
Width A	3.822 m
Length B	2.604 m
Weight	2.430 kg
Temperature	10° - 43°
Humidity	<95 %
Noise level	77 dB
Average power consumption	15 kW
Installed electrical power	31.5 kW

For more information:

www.lectra.com

