

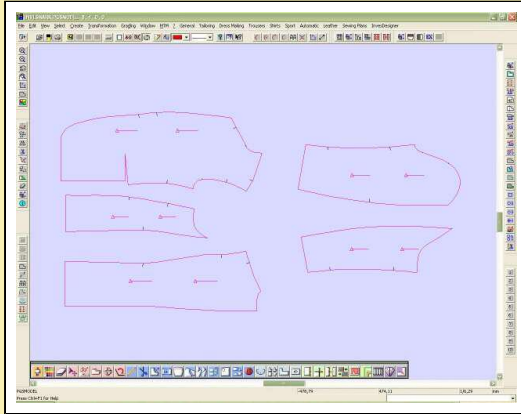


PGS



Fashion, Apparel

## PGS: The value of creativity



The creation of patterns is the result of a perfect synergy between professional creativity and techniques. By enhancing this combination with simple and efficient tools, you can reduce production time, avoid mistakes, and increase productivity. PGS's new range has been developed to ease the recurrent tasks of pattern designers and support their creativity in today's environment of delocalization of technology as well as know-how. The PGS range also includes modules for digitizing and pilots for plotting base patterns or graded patterns.

### Cutting-edge technology

PGS is based on an open-system philosophy that integrates the most advanced technologies: Windows 2000/XP environment, SQL server 2000 relational database, stand-alone or client-server configuration, consolidated standard tools, Internet integration.

### Productivity

Specific options and incorporated automated tasks drastically reduce pattern industrialization times.

### Customized solutions

For all recurring tasks, you can create a macro that can be run automatically.

### Easy-to-use

A simple and completely graphic interface based on Windows standards.

### Professional

Special functions allow optimization of pattern creation, transformation and grading.

### Integrated

Data generated with the PGS system can be completely integrated with the rest of marker making and product management solutions. Any modification made to a pattern can be viewed in real time in our solutions of marker making and product management.



PGS



Lectra

Fashion, Apparel

Offering: modules and options

Lectra PGS V8R1

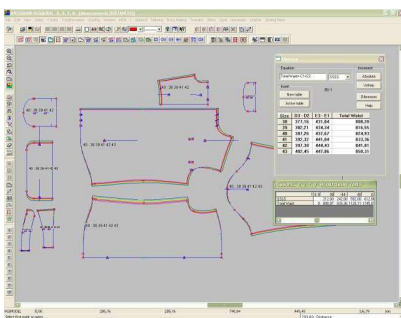


(c) Copyright 2005 LECTRA SA (France) Tous droits réservés - All rights reserved

### PGS V8 range

#### ▣ Your needs: our answer

PGS range has been built to perfectly match your requirements according to the specific type of activities you want to perform, your expertise level and your productivity challenges.



### PGS Formula V8

#### ▣ The easy tool for pattern making

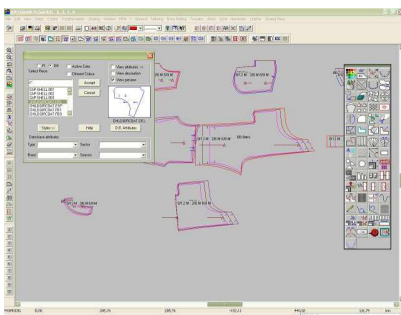
PGS Formula is the entry-level product in the PGS range. It provides all the required tools to quickly prepare your patterns for production:

- Use all PGS Formula transformation facilities, pleats, facing, darts, etc. and generate new patterns from existing ones

- Benefit from a wide range of industrialization tools to make steps faster

- Access professional grading features, multibase grading for childrenswear, grading with drops and conformation for menswear, etc. and greatly simplify grading.

PGS Formula supports you in handling all your pattern making activities at the production stage and greatly improves your final productivity!



### PGS Indus V8

#### ▣ Facilitate your industrialization tasks

PGS Indus includes PGS Formula and enables the creation basic garments and performing checking, alteration, industrialization and grading activities with advanced functions:

- Ease the creation of any of your basic garments with basic features and product-dedicated macros

- Greatly facilitate difficult and time-consuming transformation tasks like darts repartition or fan creation with advanced tools

- Make grading even easier with extra grading features like the possibility of copying grading rules from one piece to another

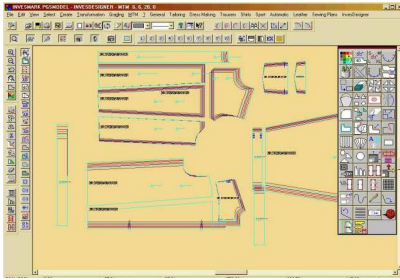
PGS Indus is the perfect solution for making industrialization and grading processes easier and faster. It will help you save time in your daily activities.



PGS



Fashion, Apparel



## PGS Model V8

Creation, industrialization and automation: the perfect combination!

PGS Model includes all PGS Indus functions plus advanced creation tools and a large set of automated tasks. With PGS Model, you have the perfect solution for developing both simple or complex patterns:

- Benefit from the support of an advanced pattern creation solution and create from scratch or from existing patterns and express your creativity while ensuring perfect pattern quality
- Enjoy a wider set of macros or develop your own to automate any task
- Use state-of-the-art checking facilities like dependant sleeve ease control and ensure pattern accuracy and perfect fitting
- Define transformations for mass-customization and ease the made-to-measure altering process

PGS Model is fully customizable and allows you to accomplish your daily tasks in total comfort with a solution that suits you.

With PGS Model, you will be assured of maximum quantitative and qualitative results and increase your productivity!



PGS



Lectra

Fashion, Apparel

## Technical specifications

Hardware and software configuration for each module

Processor Intel® Pentium® (III 800MHz; IV 2GHz)

Microsoft® Windows 2000 (Service Pack 3 and Service Pack 4),

Windows XP® (Service Pack 1)

256 Mb RAM minimum.

Software requirements for server

Windows® 2000 Server (with Service Pack 3 and Service Pack 4),

Windows® XP Server (with Service Pack 1)

SQL server 2000 Database

Hardware requirements for server

CPU: Pentium IV 2 GHz

RAM: 2 GB (extensible to 4 GB)

Disk size: 10 GB for installation, 10 GB per 1000 files

Network requirements

High Speed Network recommended – 100 MB

Client workstation requirements

Windows XP Professional

100 BaseT Ethernet Adapter with TCP/IP (10 MB possible, but with lower performance)

4 Button mouse

Standard keyboard

CD ROM Drive (optional for installation)

Configuration	Optimum	Minimum
Processor	Pentium IV 2 GHz	Pentium III 800 MHz
RAM	512 MB	256 MB



PGS



Lectra

Fashion, Apparel

Service offering



#### Software Evolution

Software Evolution is a subscription service that gives you access to the latest versions of Lectra software, allowing you to continually improve technical performance and to optimize your design environment with each technological innovation. Software Evolution secures your investment over the long term. This service allows you to enjoy state-of-the-art technology while achieving substantial savings.



#### Remote Expertise

Remote Expertise offers global access to our experts and technical specialists at Lectra's International Call centers in Atlanta, USA (for North America); Bordeaux, France (for Europe); Madrid, Spain; Milan, Italy; and Shanghai, China (for Asia). Your CAD/CAM software and hardware can be accessed remotely by Lectra teams to provide real-time IT support for software problems, production needs and workflow processes. In addition, you can instantly download files or software patches to correct minor problems.



#### Training

Lectra's training ensures rapid integration and optimal use of your software or your Lectra CAD-CAM equipment. With more than 120 instructors, this training can be provided on-site with customized programs or at Lectra's training centers throughout the world. Select the training modules best suited to your needs and combine them to make a customized training program.

#### Call Centers

North America: +1 877 453 2872

Asia Pacific: +8621 6121 2211

Europe: +00 800 00 53 2872

Italy: +800 532 872

Spain: +34 900 800 501