

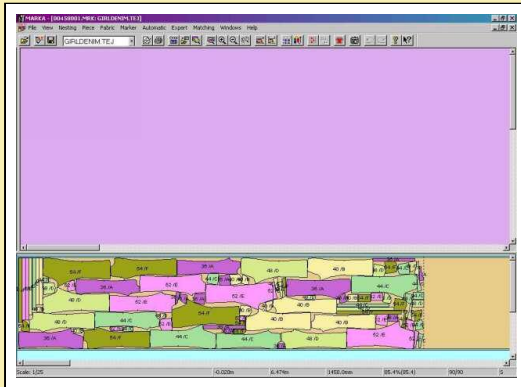


# MGS



Fashion, Apparel

## MGS: The most advanced and versatile CAD system for the apparel industry



MGS offers an effective, unique response to a clearly identified need for an application that automatically produces markers with all the efficiency of an experienced operator.

The apparel industry has a critical need for a tool that not only helps save fabric but also optimizes the efficiency of an operator's work during the most critical periods of the production cycle.

### Cutting-Edge Technology

MGS is based on an open-system philosophy which integrates the most advanced technologies for Windows 2000 and XP environments and relational databases: SQL server 2000, stand-alone or client-server configuration, consolidated standard tools, Internet integration.

### Reliable

7 days a week, 365 days a year.

### Versatile

Quick, efficient marker creation for prototyping, costing and production (with results comparable or superior to those obtained through expert manual processing).

### User-friendly

Easy-to-use, comprehensive graphical interface, based on Windows standards.

### Professional

Specific functions for optimizing the creation of markers, and guaranteeing time and cost savings.

### Fully integrated

The MGS Server can receive direct input from other programs such as WebMTM for made-to-measure garments.



# MGS



Fashion, Apparel

## Offering: modules and options



### MGS V8R1

Marker Making Solution



(c) Copyright 2005 LECTRA SA (France) Tous droits réservés - All rights reserved

## MGS V8 range

### ▣ Your needs: our answer

The MGS range perfectly matches your requirements, according to the specific activities you need to perform, your expertise level and your productivity challenges.



### MGS Formula V8R1



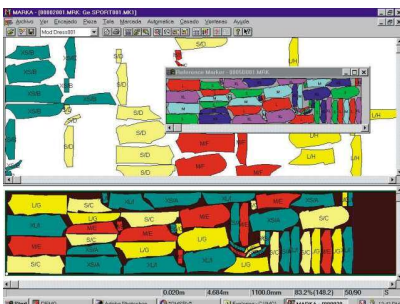
(c) Copyright 2005 LECTRA SA (France) Tous droits réservés - All rights reserved

## MGS Formula V8

### ▣ Marker Optimization

MGS Formula offers the necessary tools for interactive marker-making and for generating reports or productivity statistics:

- **Reliable:** Take advantage of the wide range of MGS Formula pre-defined parameters and greatly reduce your error margins.
- **Dynamic:** Perform a dynamic process that enables you to insert new sizes, models or pieces to the process.
- **Ergonomic:** Use all types of fabrics; open, tubular, striped or checked, etc. The system calculates the exact position of the pieces on the fabric while automatically maximizing material efficiency.
- **Productive:** Control the process by operator, date and workstation. This feature evaluates productivity and returns a complete set of reports and data.



## MGS Advanced V8

### ▣ Work with precision and save fabric

The MGS Advanced module includes all functions of the MGS Formula.

**Synergy:** Combine manual expertise with artificial intelligence using the system's interactive, automated marker creation features.

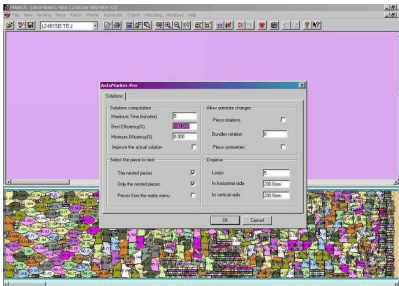
- **Optimization:** Rearrange pieces to optimize nesting and improve cutting quality.
- **Efficiency:** Use the automatic marker-making feature to improve efficiency.
- **Quality:** Define areas of the fabric to be excluded from the interactive or automatic marker creation process.
- **Experience:** Identify features of any marker in the database to use them as reference points. This is an especially valuable feature during the creation of made-to-measure garments.



# MGS



Fashion, Apparel

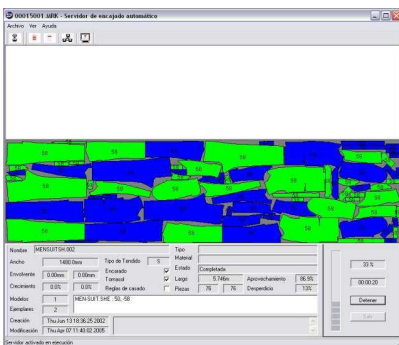


## MGS Pro V8

### Boost productivity with the best automatic marker program

MGS Pro includes all the functions of MGS Advanced. MGS Pro is the most advanced solution for single workstations:

- Marker optimization: Reprocess existing pieces to improve marker efficiency.
- Reliable: Take advantage of the wide range of MGS Pro pre-defined parameters and greatly reduce your error margins.
- Quality: In automatic mode, the system applies rules to position the pieces based on specific criteria previously defined by the user (fabric areas, proximity to other pieces, security distances, etc.).
- Ergonomic: Use all types of fabrics (open, tubular, striped or checked) and automatically calculate the exact position of the pieces on the fabric.
- Productive: MGS Pro matches the productivity of a highly-qualified operator.



## MGS Server V8

### The benefits of a server

MGS Server includes all MGS Pro functionalities and allows you to perform marker making with a server. With this configuration, you benefit from the automatic sharing of markers between workstations as well as automatic marker making.

- Efficient: With the server, nest all pieces in a completely independent manner.
- Productive: Increase your productivity with the ability to produce 24 hours a day, 365 days a year.
- Economical: Save materials and reduce all your operating costs.

MGS Server brings you all the performance of automatic marker making coupled with the advantages of a server, ensuring significant time and material savings.



MGS



Lectra

Fashion, Apparel

## Technical specifications

Hardware and software configuration for each module

Processor Intel® Pentium® (III 800MHz; IV 2GHz)

Microsoft® Windows 2000 (Service Pack 3 and Service Pack 4),

Windows XP® (Service Pack 1)

256 Mb RAM minimum.

Software requirements for server

Windows® 2000 Server (with Service Pack 3 and Service Pack 4),

Windows® XP Server (with Service Pack 1)

SQL server 2000 Database

Hardware requirements for server

CPU: Pentium IV 2 GHz

RAM: 2 GB (extensible to 4 GB)

Disk size: 10 GB for installation, 10 GB per 1000 files

Network requirements

High Speed Network recommended – 100 MB

Client workstation requirements

Windows XP Professional

100 BaseT Ethernet Adapter with TCP/IP (10 MB possible, but with lower performance)

4 Button mouse

Standard keyboard

CD ROM Drive (optional for installation)

Configuration	Optimum	Minimum
Processor	Pentium IV 2 GHz	Pentium III 800 MHz
RAM	512 MB	256 MB



**MGS**



**Lectra**

Fashion, Apparel

**Service offering**



#### Software Evolution

Software Evolution is a subscription service that gives you access to the latest versions of Lectra software, allowing you to continually improve technical performance and to optimize your design environment with each technological innovation. Software Evolution secures your investment over the long term. This service allows you to enjoy state-of-the-art technology while achieving substantial savings.



#### Remote Expertise

Remote Expertise offers global access to our experts and technical specialists at Lectra's International Call centers in Atlanta, USA (for North America); Bordeaux, France (for Europe); Madrid, Spain; Milan, Italy; and Shanghai, China (for Asia). Your CAD/CAM software and hardware can be accessed remotely by Lectra teams to provide real-time IT support for software problems, production needs and workflow processes. In addition, you can instantly download files or software patches to correct minor problems.



#### Training

Lectra's training ensures rapid integration and optimal use of your software or your Lectra CAD-CAM equipment. With more than 120 instructors, this training can be provided on-site with customized programs or at Lectra's training centers throughout the world. Select the training modules best suited to your needs and combine them to make a customized training program.

#### **Call Centers**

North America: +1 877 453 2872

Asia Pacific: +8621 6121 2211

Europe: +00 800 00 53 2872

Italy: +800 532 872

Spain: +34 900 800 501