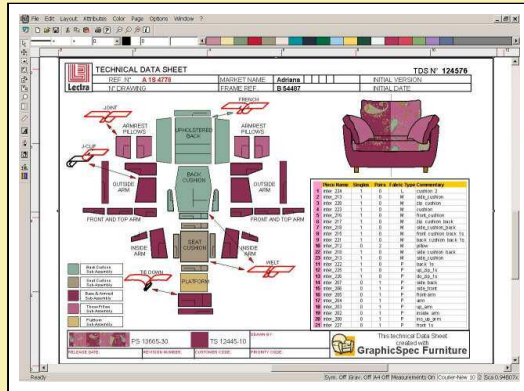




The technical specification solution specially designed for upholstered furniture



Preparing technical specifications for the production of upholstered products is often tedious and time-consuming when it's done using paper documents.

GraphicSpec Furniture is the technical drawing software solution that enables development teams to speed up the creation and communication of industrial binders.

GraphicSpec Furniture lets you share unique, reliable and clear information internally or with your industrial partners, and avoid errors of interpretation and losses of data.

With GraphicSpec Furniture, create and share technical specifications for production with ease

Create sewing and assembly guides rapidly

Import pattern and marker-making files for direct use.

Organize patterns on screen in accordance with sewing and assembly methods, and easily add all the information required using simple, specially-adapted technical drawing tools.

Create sewing diagrams, pattern measurements, legends and add text and barcodes.

Use libraries with sewing diagrams and care labels.

Update your plans rapidly.

Use reliable, centralized data

No more data losses! Technical plans are archived in organized computer folders.

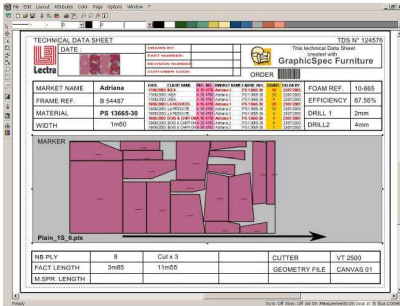
Facilitate sharing

Reduce the risk of errors of interpretation! All technical data are totally readable and easy to interpret.

An easy-to-use solution

Share industrial binders, plans and monitoring sheets.

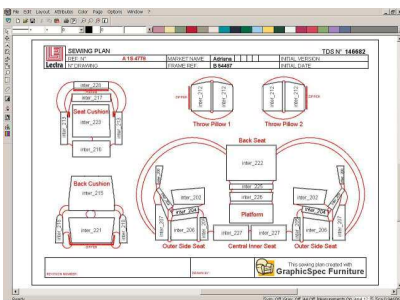
GraphicSpec Furniture is a user-friendly software that is very easy to use. Teams can be rapidly operational.



Direct import of production-ready patterns and markers

GraphicSpec Furniture V2 lets you work direct from patterns produced with Formaris Furniture pattern-making software and markers produced with Diamino Furniture. You can customize the graphic attributes of your patterns: external contours, cutting lines, notches, drills, leather quality areas, etc. The risks of error and loss of data are reduced to a minimum.

Import via DXF.AAMA of patterns produced using other pattern-making software available on the market.



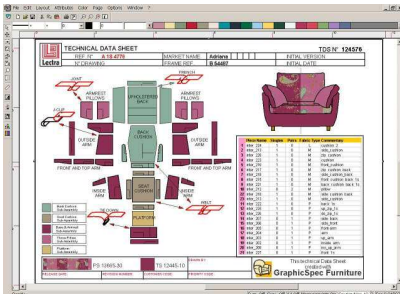
A simple, powerful technical drawing tool

In an ergonomic working environment, you can organize patterns on the screen and benefit from a broad palette of vectorial drawing tools to insert sewing diagrams, create symbols, top stitching lines, gathering information, zips, text, hatched areas, arrows, etc.

You can also control the length of cutting lines and the distance between notches.

You can scan the images and fabrics you need for your documents.

You can create barcodes to go on production monitoring sheets.



Insertion of bills of material

GraphicSpec Furniture V2 lets you integrate BOM tables and all kinds of information from standard Windows desktop software using OLE technology.

Sharing technical plans

Print technical plans or transfer files in the following formats: SVG, EMF, WMF, JPEG, TIFF, BMP, etc.

**Hardware and software requirements**

Hardware and software requirements

- Windows® XP Professional (recommended), Windows NT® 4.0, Windows® 2000 Professional or Windows® 2000 Server
- CD-ROM drive
- 2-button mouse
- 101 key keyboard

Configuration	Optimum	Minimum
Processor	Pentium IV 2GHz	Pentium III 800 MHz
RAM	1 GB	512 MB
Hard drive	40 GB	20 GB
Graphic card	1280 x 1024 16.7 million colors	1280 x 1024 16.7 million colors



Software Evolution

Software Evolution is a subscription service that gives you access to the latest versions of Lectra software, allowing you to continually improve technical performance and to optimize your design environment with each technological innovation. Software Evolution secures your investment over the long term. This service allows you to enjoy state-of-the-art technology while achieving substantial savings.



Remote Expertise

Remote Expertise offers global access to our experts and technical specialists at Lectra's International Call centers in Atlanta, USA (for North America); Bordeaux, France (for Europe); Madrid, Spain; Milan, Italy; and Shanghai, China (for Asia). Your CAD/CAM software and hardware can be accessed remotely by Lectra teams to provide real-time IT support for software problems, production needs and workflow processes. In addition, you can instantly download files or software patches to correct minor problems.



Training

Lectra's training ensures rapid integration and optimal use of your software or your Lectra CAD-CAM equipment. With more than 120 instructors, this training can be provided on-site with customized programs or at Lectra's training centers throughout the world. Select the training modules best suited to your needs and combine them to make a customized training program.

Call Centers

North America: +1 877 453 2872

Asia Pacific: +8621 6121 2211

Europe: +00 800 00 53 2872

Italy: +800 532 872

Spain: +34 900 800 501

* Windows® 2000 and Windows® XP are trademarks of Microsoft Corporate registered and/or used in the United States and/or in other countries.